

# BOM for welded structural cabin

POS	T015491	SLEEPING CABIN WITH DOORS	QUANTITY PER MAIN ASSEMBLY	UNIT	WEIGHT kg	MATERIAL	PRODUCTION TECHNOLOGY	TOOLINGS/FIXTURES	MANUFACTURER
1	T015490	SLEEPING CABIN WELDED	1	A	331,523	-	WELDING	PRODUCT SUPPORT-FIXTURE/WELDING TOOL	BEML
2	T015293	RAW DOOR LEFT SIDE	1	A	19,211	-	WELDING	PRODUCT SUPPORT-FIXTURE/WELDING TOOL	BEML
3	T015294	RAW DOOR LEFT SIDE	1	A	19,211	-	WELDING	PRODUCT SUPPORT-FIXTURE/WELDING TOOL	BEML
4	T015151	LEFT HINGE ASSEMBLY	2	A	0,968	-			TARA
5	T015152	RIGHT HINGE ASSEMBLY	2	A	0,968	-			TARA
6	T015471	FRONT COVER EQUIPPED ASSEMBLY	1	A	11,505	-	WELDING	PRODUCT SUPPORT-FIXTURE/WELDING TOOL	BEML
7	442 9 8703 048 4	LEFT FRONT COVER ASSEMBLY	1	A	1,977	-			TARA
8	442 9 8703 058 4	RIGHT FRONT COVER ASSEMBLY	1	A	2,444	-			TARA
9	T015467	SIDEWAYS PART BRACKET ASSEMBLY	2	A	0,034	-	LASER CUTTING/BENDING	LASER/BENDING MACHINES	BEML
21	TW00032	Screw M6x12-8,8-MKS 720 ISO 4017	8	P	0,005	-			PURCHASE
22	TW00038	Screw M8x16-8,8-MKS 720 ISO 4017	2	P	0,012	-			PURCHASE
23	309 115 091 000	Screw M8x20-10,9-DAC ISO 7380	6	P	0,011	-			PURCHASE
24	TW00042	Screw M8x25-8,8-MKS 720 ISO 4017	20	P	0,016	-			PURCHASE
25	TW00138	Lock washer D6-MKS 720 CSN 02174	8	P	0,001	-			PURCHASE
26	TW00139	Lock Washer D8-MKS 720 CSN 02174	28	P	0,002	-			PURCHASE
27	TW00134	Washer D9-MKS 720 CSN 021729,1	20	P	0,005	-			PURCHASE
28	TW00097	Hexagon nut M6-8-MKS 720 ISO 403	2	P	0,003	-			PURCHASE
29	TW00098	Hexagon nut M8-8-MKS 720 ISO 403	2	P	0,006	-			PURCHASE

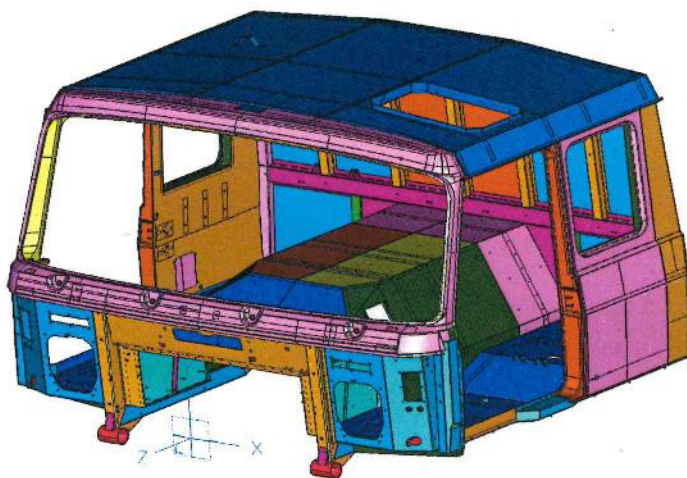
387,902



*J. Plank*

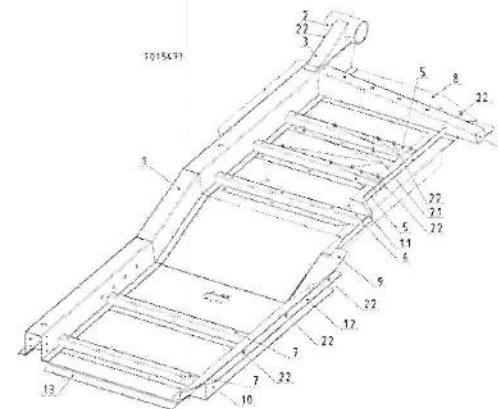
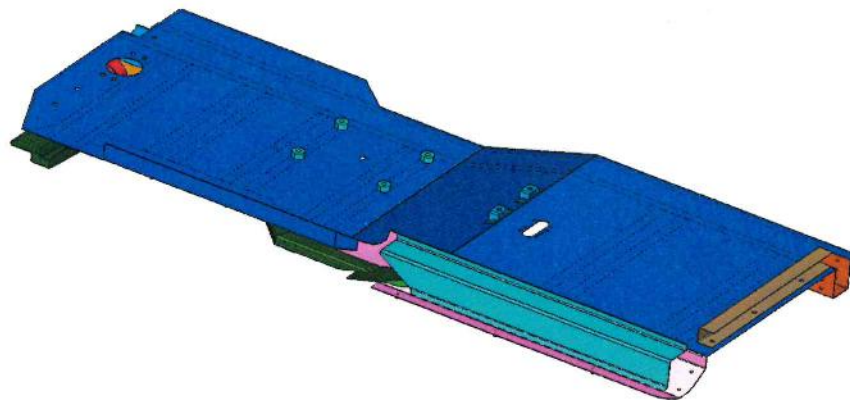
	T015490	SLEEPING CABIN WELDED							
POS	PART NUMBER	DESCRIPTION	QUANTITY PER MAIN ASSEMBLY	UNIT	WEIGHT kg	MATERIAL	PRODUCTION TECHNOLOGY	TOOLINGS/FIXTURES	MANUFACTURER
1	T015473	LEFT FLOOR SKS ASSEMBLY	1	A	38,919		WELDING	PRODUCT SUPPORT-FIXTURE/WELDING TOOL	BEML
2	T015474	RIGHT FLOOR SKS ASSEMBLY	1	A	41,717		WELDING	PRODUCT SUPPORT-FIXTURE/WELDING TOOL	BEML
3	T015362	BACK WALL WITHOUT WINDOW	1	A	47,064		WELDING	PRODUCT SUPPORT-FIXTURE/WELDING TOOL	BEML
4	T015404	LEFT SIDE COMPL,SLEEPING CABIN	1	A	29,333		WELDING	PRODUCT SUPPORT-FIXTURE/WELDING TOOL	BEML
5	T015405	RIGHT SIDE COMPL,SLEEPING CABIN	1	A	29,333		WELDING	PRODUCT SUPPORT-FIXTURE/WELDING TOOL	BEML
6	T016607	FRONT PART ASSEMBLY	1	A	51,344		WELDING	PRODUCT SUPPORT-FIXTURE/WELDING TOOL	BEML
7	T015451	ROOF SLEEPING CABIN	1	A	46,964		WELDING	PRODUCT SUPPORT-FIXTURE/WELDING TOOL	BEML
8	T015472	MOTOR COVER SKS ASSEMBLY	1	A	42,247		WELDING	PRODUCT SUPPORT-FIXTURE/WELDING TOOL	BEML
9	T015337	TRANSOM LEFT ASSEMBLY	1	A	2,223		WELDING	PRODUCT SUPPORT-FIXTURE/WELDING TOOL	BEML
10	T015338	TRANSOM RIGHT ASSEMBLY	1	A	2,223		WELDING	PRODUCT SUPPORT-FIXTURE/WELDING TOOL	BEML
11	T015487	SIDE WALL BLIND	2	P	0,059	SHEET METAL 1mm	LASER CUTTING/BENDING	LASER/BENDING MACHINES	BEML
12	442 9 2510 012 4	LEFT RIBBON END	1	P	0,01	SHEET METAL 1mm	LASER CUTTING/BENDING	LASER/BENDING MACHINES	BEML
13	442 9 2510 013 4	RIGHT RIBBON END	1	P	0,01	SHEET METAL 1mm	LASER CUTTING/BENDING	LASER/BENDING MACHINES	BEML
14	442 9 2215 001 4	PLATE OF CAR BODY NUMBER	1	P	0,016	SHEET METAL 1mm	LASER CUTTING	LASER MACHINE	BEML

331,462

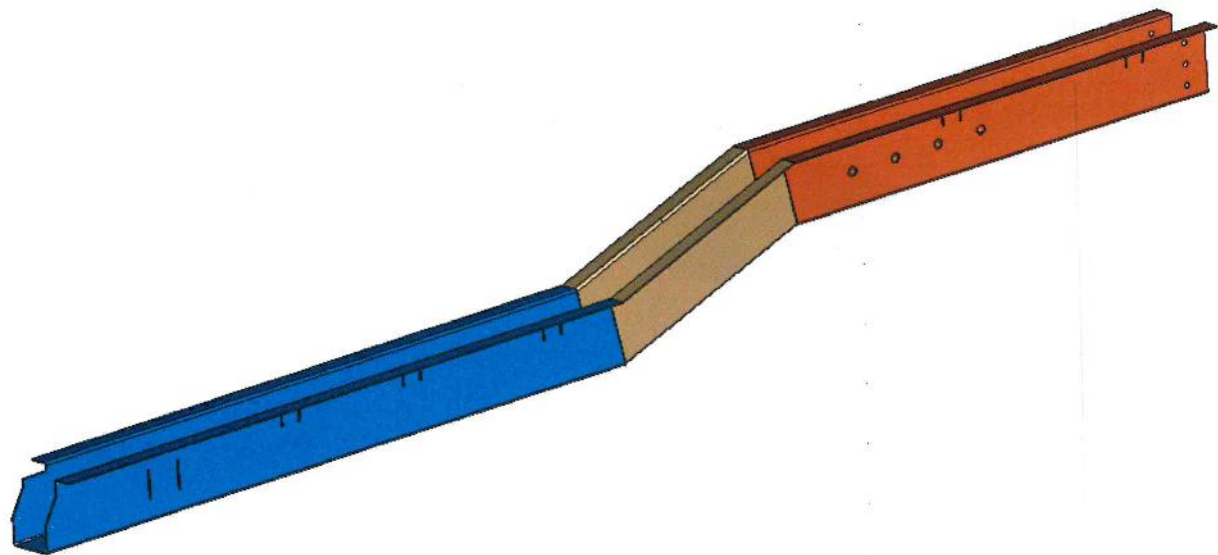




T015473 LEFT FLOOR SKS ASSEMBLY									
POS	PART NUMBER	DESCRIPTION	QUANTITY PER MAIN ASSEMBLY	UNIT	WEIGHT kg	MATERIAL	PRODUCTION TECHNOLOGY	TOOLINGS/FIXTURES	MANUFACTURER
1	T015441	L,IN,STILL SLEEP,CAB,ASSEMBLY	1	A	9,905		WELDING	PRODUCT SUPPORT-FIXTURE/WELDING TOOL	BEML
2	T008071	HOUSING	1	P	1,103		STEEL PIPE	LATHE-TURNING	BEML
3	T015009	REAR HOUSING STIFFENER	1	P	0,69	SHEET METAL 2mm	LASER CUTTING/BENDING	LASER/BENDING MACHINES	BEML
4	T015221	LEFT FRONT CROSSMEMBER ASSEMBLY	1	A	2,059		WELDING	WELDING TOOL	BEML
5	T015013	FLOOR STIFFENER 1	2	P	0,975	SHEET METAL 2mm	LASER CUTTING/BENDING	LASER/BENDING MACHINES	BEML
6	T015018	FLOOR STIFFENER 2 ASSEMBLY	1	A	1,148		WELDING	WELDING TOOL	BEML
7	T015409	CROSSBEAM BACK	2	P	1,13	SHEET METAL 2mm	LASER CUTTING/BENDING	LASER/BENDING MACHINES	BEML
8	T015415	LEFT FLOOR SLEEP,	1	P	13,854	SHEET METAL 1,5mm	LASER CUTTING/BENDING	LASER/BENDING MACHINES	BEML
9	T015021	FRONT COVER SHEET LEFT	1	P	0,216	SHEET METAL 1,5mm	LASER CUTTING/BENDING	LASER/BENDING MACHINES	BEML
10	T015413	LEFT STIFFENER PILAR LATERAL	1	P	1,558	SHEET METAL 1,5mm	LASER CUTTING/BENDING	LASER/BENDING MACHINES	BEML
11	T015019	STILL L PROFILE LEFT	1	P	0,946	SHEET METAL 2mm	LASER CUTTING/BENDING	LASER/BENDING MACHINES	BEML
12	T015411	BACK COVER SHEET LEFT	1	P	1,804	SHEET METAL 1,5mm	LASER CUTTING/BENDING	LASER/BENDING MACHINES	BEML
13	T015029	LEFT REAR LOWER CROSSMEMBER	1	P	0,887	SHEET METAL 2mm	LASER CUTTING/BENDING	LASER/BENDING MACHINES	BEML
14	T015447	GIRDER BRACKET ASSEMBLY	2	A	0,052		WELDING	WELDING TOOL	BEML
15	442 9 5077 074 4	SPACER	4	P	0,086		STEEL CYLINDER	TURNING MACHINE	BEML
21	309 111 430 000	Screw M6x25 11-06-025	4	P	0,006		-	-	PURCHASE
22	TW00738	Screw M8x15 11-08-015	12	P	0,006		-	-	PURCHASE

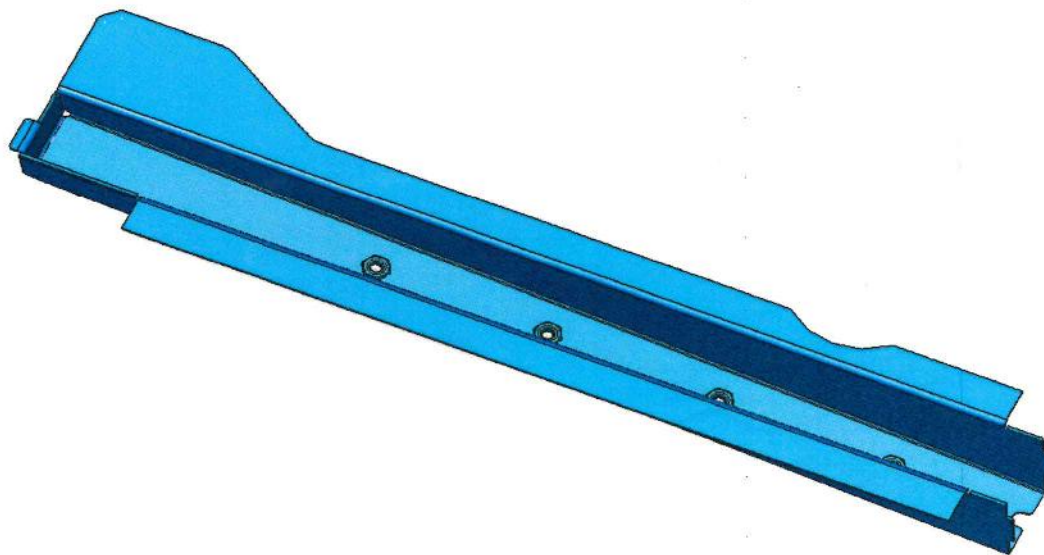


	T015441	L,IN,STILL SLEEP,CAB,ASSEMBLY							
POS	PART NUMBER	DESCRIPTION	QUANTITY PER MAIN ASSEMBLY	UNIT	WEIGHT kg	MATERIAL	PRODUCTION TECHNOLOGY	TOOLINGS/FIXTURES	MANUFACTURER
1	T015207	LEFT INNER SIDE STILL	1	P	4,28	SHEET METAL 1,5mm	LASER CUTTING/BENDING	LASER/BENDING MACHINES	BEML
2	T015209	INNER SIDE STILL LEFT	1	P	1,443	SHEET METAL 1,5mm	LASER CUTTING/BENDING	LASER/BENDING MACHINES	BEML
3	T015407	CROSSBEAM IN,L,BACK SLEEP,	1	P	3,133	SHEET METAL 1,5mm	LASER CUTTING/BENDING	LASER/BENDING MACHINES	BEML
4	T015203	STIFFENER SIDE STILL INTER,	2	P	0,525	SHEET METAL 5mm	LASER CUTTING	LASER MACHINE	BEML

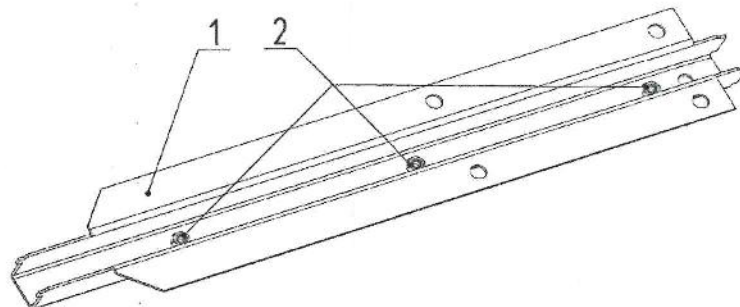
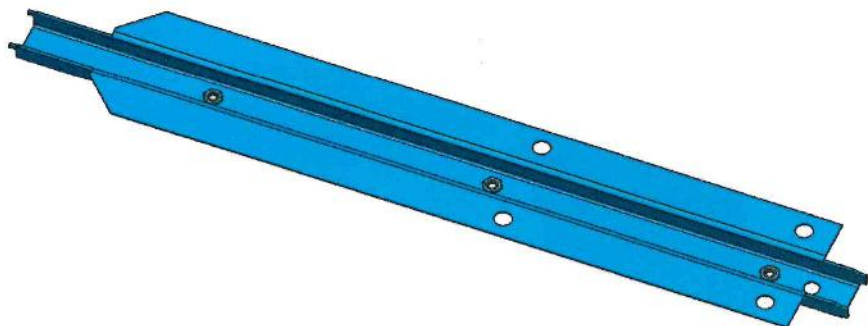




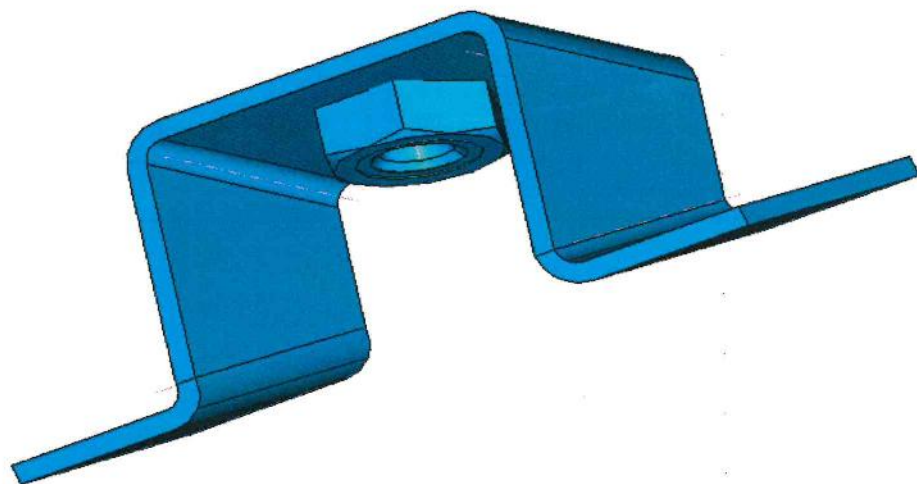
	T015221	LEFT FRONT CROSSMEMBER ASSEMBLY							
POS	PART NUMBER	DESCRIPTION	QUANTITY PER MAIN ASSEMBLY	UNIT	WEIGHT kg	MATERIAL	PRODUCTION TECHNOLOGY	TOOLINGS/FIXTURES	MANUFACTURER
1	T015011	LEFT FRONT TRANSOM	1	P	2,035	SHEET METAL 2mm	LASER CUTTING/BENDING	LASER/BENDING MACHINES	BEML
2	TW00115	Hexagon nut M8 DIN 929	4	P	0,025		-	-	PURCHASE



	T015018	FLOOR STIFFENER 2 ASSEMBLY							
POS	PART NUMBER	DESCRIPTION	QUANTITY PER MAIN ASSEMBLY	UNIT	WEIGHT kg	MATERIAL	PRODUCTION TECHNOLOGY	TOOLINGS/FIXTURES	MANUFACTURER
1	T015017	FLOOR STIFFENER 2	1	P	1,139	SHEET METAL 2mm	LASER CUTTING/BENDING	LASER/BENDING MACHINES	BEML
2	TW00114	Hexagon nut M6 DIN 929	3	P	0,009		-	-	PURCHASE

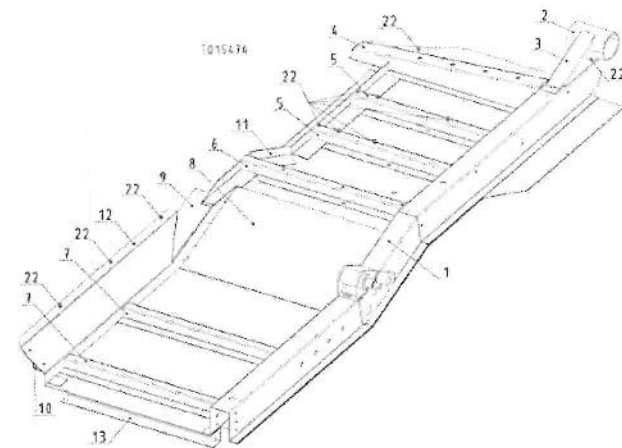
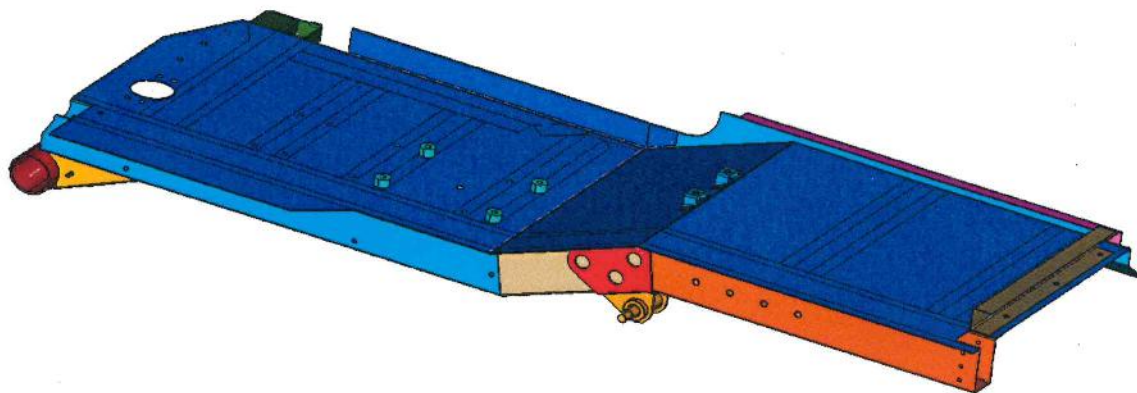


	T015447	GIRDER BRACKET ASSEMBLY							
POS	PART NUMBER	DESCRIPTION	QUANTITY PER MAIN ASSEMBLY	UNIT	WEIGHT kg	MATERIAL	PRODUCTION TECHNOLOGY	TOOLINGS/FIXTURES	MANUFACTURER
1	T015448	GIRDER BRACKET	1	P	0,046	SHEET METAL 2mm	LASER CUTTING/BENDING	LASER/BENDING MACHINES	BEML
2	TW00115	Hexagon nut M8 DIN 929	1	P	0,006		-	-	PURCHASE



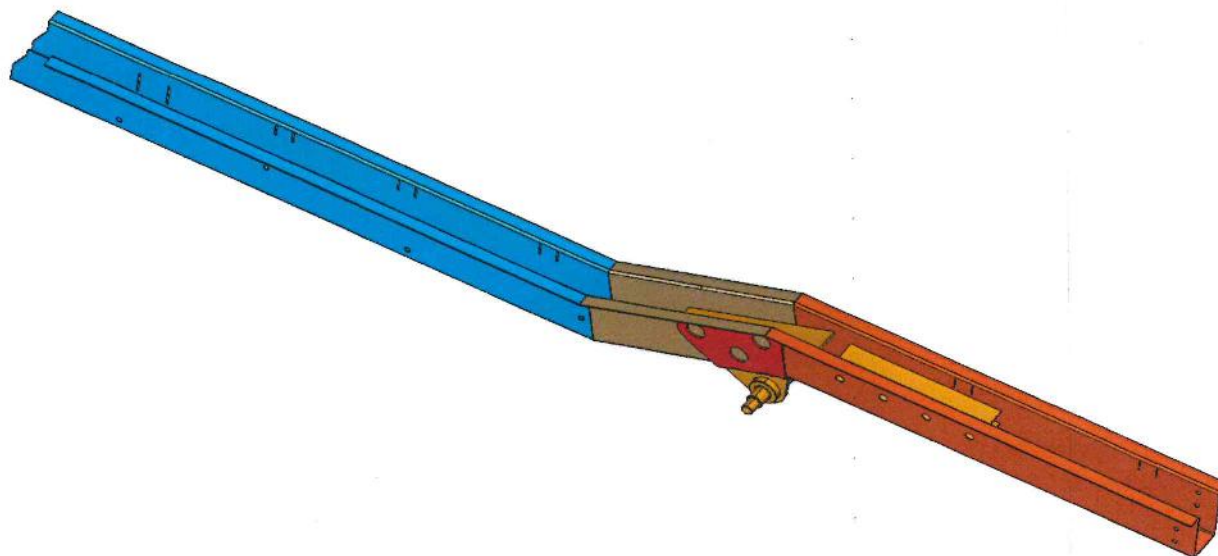


	T015474	RIGHT FLOOR SKS ASSEMBLY							
POS	PART NUMBER	DESCRIPTION	QUANTITY PER MAIN ASSEMBLY	UNIT	WEIGHT kg	MATERIAL	PRODUCTION TECHNOLOGY	TOOLINGS/FIXTURES	MANUFACTURER
1	T015442	P,IN,STILL SLEEP,CAB,ASSEMBLY	1	A	12,703		WELDING	PRODUCT SUPPORT-FIXTURE/WELDING TOOL	BEML
2	T008071	HOUSING	1	P	1,103		STEEL PIPE	LATHE-TURNING	BEML
3	T015009	REAR HOUSING STIFFENER	1	P	0,69	SHEET METAL 2mm	LASER CUTTING/BENDING	LASER/BENDING MACHINES	BEML
4	T015222	RIGHT FRONT CROSSMEMBER ASSEMBLY	1	A	2,059		WELDING	WELDING TOOL	BEML
5	T015013	FLOOR STIFFENER 1	2	P	0,975	SHEET METAL 2mm	LASER CUTTING/BENDING	LASER/BENDING MACHINES	BEML
6	T015018	FLOR STIFFENER 2 ASSEMBLY	1	A	1,148		WELDING	WELDING TOOL	BEML
7	T015409	CROSSBEAM BACK	2	P	1,13	SHEET METAL 2mm	LASER CUTTING/BENDING	LASER/BENDING MACHINES	BEML
8	T015416	RIGHT FLOOR SLEEP,	1	P	13,882	SHEET METAL 1,5mm	LASER CUTTING/BENDING	LASER/BENDING MACHINES	BEML
9	T015022	FRONT COVER SHEET RIGHT	1	P	0,216	SHEET METAL 1,5mm	LASER CUTTING/BENDING	LASER/BENDING MACHINES	BEML
10	T015414	RIGHT STIFFENER PILAR LATERAL	1	P	1,558	SHEET METAL 1,5mm	LASER CUTTING/BENDING	LASER/BENDING MACHINES	BEML
11	T015020	STILL L PROFILE RIGHT	1	P	0,946	SHEET METAL 2mm	LASER CUTTING/BENDING	LASER/BENDING MACHINES	BEML
12	T015412	BACK COVER SHEET RIGHT	1	P	1,804	SHEET METAL 1,5mm	LASER CUTTING/BENDING	LASER/BENDING MACHINES	BEML
13	T015030	RIGHT REAR LOWER CROSSMEMBER	1	P	0,887	SHEET METAL 2mm	LASER CUTTING/BENDING	LASER/BENDING MACHINES	BEML
14	T015447	GIRDER BRACKET ASSEMBLY	2	A	0,052		WELDING	WELDING TOOL	BEML
15	442 9 5077 074 4	SPACER	4	P	0,086		STEEL CYLINDER	TURNING MACHINE	BEML
22	TW00738	Screw M8x15 11-08-015	11	P	0,006		-	-	PURCHASE

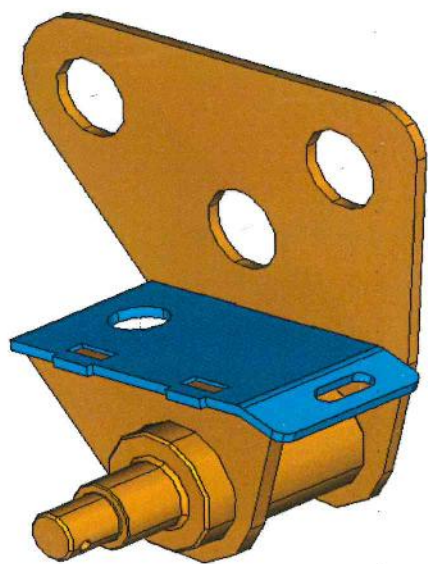




	T015442	P,IN,STILL SLEEP,CAB,ASSEMBLY							
POS	PART NUMBER	DESCRIPTION	QUANTITY PER MAIN ASSEMBLY	UNIT	WEIGHT kg	MATERIAL	PRODUCTION TECHNOLOGY	TOOLINGS/FIXTURES	MANUFACTURER
1	T015208	RIGHT INNER SIDE STILL	1	P	4,28	SHEET METAL 1,5mm	LASER CUTTING/BENDING	LASER/BENDING MACHINES	BEML
2	T015210	INNER SIDE STILL RIGHT	1	P	1,443	SHEET METAL 1,5mm	LASER CUTTING/BENDING	LASER/BENDING MACHINES	BEML
3	T015408	CROSSBEAM IN,R,BACK SLEEP,	1	P	3,133	SHEET METAL 1,5mm	LASER CUTTING/BENDING	LASER/BENDING MACHINES	BEML
4	T015203	STIFFENER SIDE STILL INTER,	3	P	0,525	SHEET METAL 5mm	LASER CUTTING	LASER MACHINE	BEML
5	T015328	CABIN TILTING BRACKET L, ASSEMBLY	1	A	1,868		WELDING	WELDING TOOL	BEML
6	T015331	TILTING BRACKET INNER SIDE PLATE	1	P	0,405		LASER CUTTING	LASER MACHINE	BEML

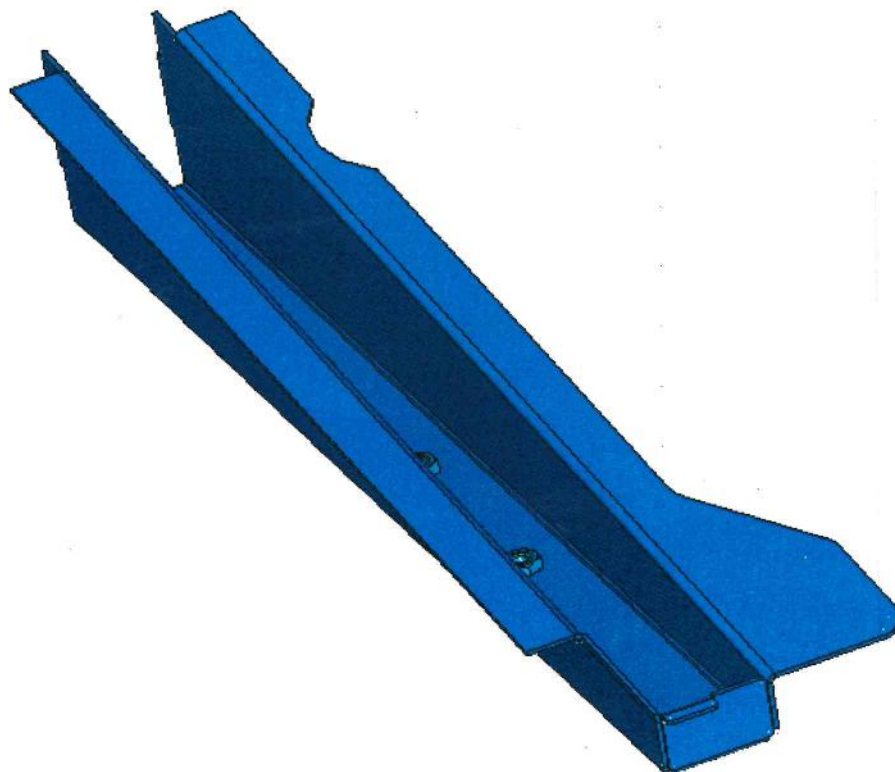


	T015328	CABIN TILTING BRACKET L, ASSEMBLY							
POS	PART NUMBER	DESCRIPTION	QUANTITY PER MAIN ASSEMBLY	UNIT	WEIGHT kg	MATERIAL	PRODUCTION TECHNOLOGY	TOOLINGS/FIXTURES	MANUFACTURER
1	T015302	TILTING BRACKET OUTER SIDE PLATE	1	P	0,533	SHEET METAL 4mm	LASER CUTTING	LASER MACHINE	BEML
2	T015304	STIFFENER STILL EXTER,LEFT	1	P	0,209	SHEET METAL 4mm	LASER CUTTING/BENDING	LASER/BENDING MACHINES	BEML
3	T015329	TILTING BRACKET SIDE PLATE	1	P	0,145	SHEET METAL 6mm	LASER CUTTING	LASER MACHINE	BEML
4	T015330	CAB, TILTING BRACKET PIN	1	P	0,98		TURNING	TURNING MACHINE	BEML

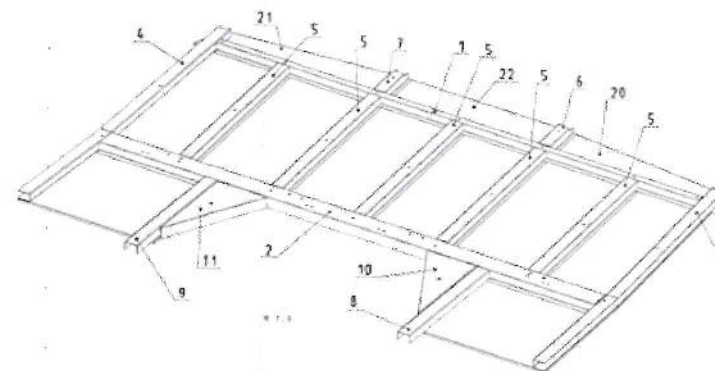
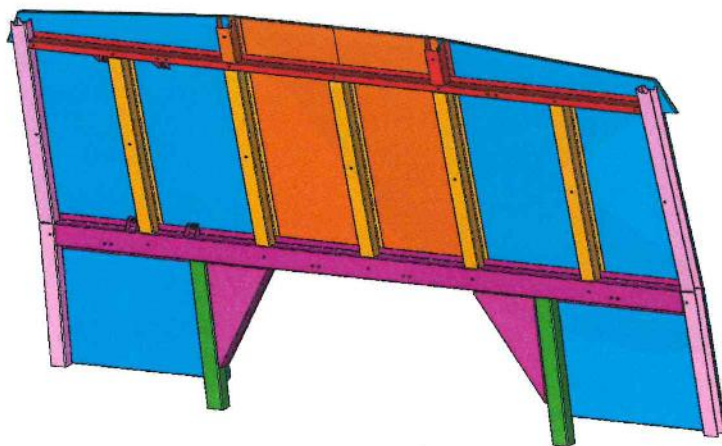




	T015222	RIGHT FRONT CROSSMEMBER ASSEMBLY							
POS	PART NUMBER	DESCRIPTION	QUANTITY PER MAIN ASSEMBLY	UNIT	WEIGHT kg	MATERIAL	PRODUCTION TECHNOLOGY	TOOLINGS/FIXTURES	MANUFACTURER
1	T015012	RIGHT FRONT TRANSOM	1	P	2,035	SHEET METAL 2mm	LASER CUTTING/BENDING	LASER/BENDING MACHINES	BEML
2	TW00115	Hexagon nut M8 DIN 929	4	P	0,025		-	-	PURCHASE

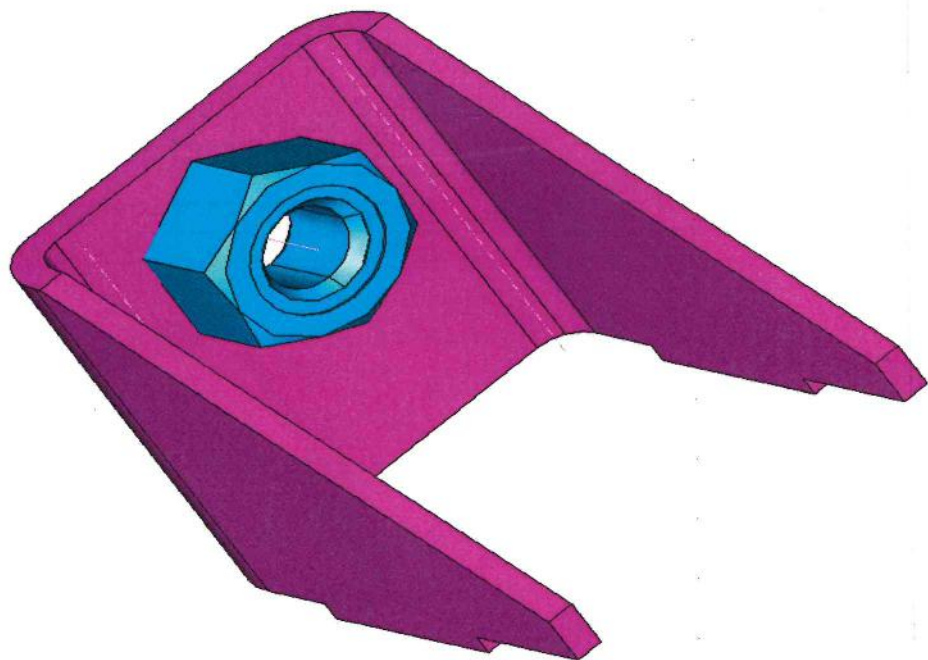


T015362		BACK WALL WITHOUT WINDOW							
POS	PART NUMBER	DESCRIPTION	QUANTITY PER MAIN ASSEMBLY	UNIT	WEIGHT kg	MATERIAL	PRODUCTION TECHNOLOGY	TOOLINGS/FIXTURES	MANUFACTURER
1	T015103	UPPER TRANSOM OF REAR WALL	1	P	3,427	SHEET METAL 1,5mm	LASER CUTTING/BENDING	LASER/BENDING MACHINES	BEML
2	T015101	TRANSOM OF REAR WALL	1	P	4,955	SHEET METAL 1,5mm	LASER CUTTING/BENDING	LASER/BENDING MACHINES	BEML
3	T015091	STAND REAR OUTER LEFT	1	P	2,785	SHEET METAL 2mm	LASER CUTTING/BENDING	LASER/BENDING MACHINES	BEML
4	T015092	STAND REAR OUTER RIGHT	1	P	2,785	SHEET METAL 2mm	LASER CUTTING/BENDING	LASER/BENDING MACHINES	BEML
5	T015095	STAND MIDDLE REAR INNER	5	P	1,199	SHEET METAL 1,5mm	LASER CUTTING/BENDING	LASER/BENDING MACHINES	BEML
6	T015097	STAND INNER REAR TOP LEFT	1	P	0,259	SHEET METAL 1,5mm	LASER CUTTING/BENDING	LASER/BENDING MACHINES	BEML
7	T015098	STAND INNER REAR TOP RIGHT	1	P	0,259	SHEET METAL 1,5mm	LASER CUTTING/BENDING	LASER/BENDING MACHINES	BEML
8	T015093	STAND IN,REAR BOTTOM LEFT	1	P	1,128	SHEET METAL 2mm	LASER CUTTING/BENDING	LASER/BENDING MACHINES	BEML
9	T015094	STAND IN,REAR BOTTOM RIGHT	1	P	1,128	SHEET METAL 2mm	LASER CUTTING/BENDING	LASER/BENDING MACHINES	BEML
10	T015099	STIFFENER REAR WALL LEFT	1	P	0,913	SHEET METAL 1,5mm	LASER CUTTING/BENDING	LASER/BENDING MACHINES	BEML
11	T015100	STIFFENER REAR WALL RIGHT	1	P	0,913	SHEET METAL 1,5mm	LASER CUTTING/BENDING	LASER/BENDING MACHINES	BEML
12	T015483	SUCTION HOLDER ASSEMBLY	4	A	0,069		WELDING	WELDING TOOL	BEML
20	T015355	BACK OUTSIDE LEFT WALL WITHOUT WINDOW	1	P	8,232	SHEET METAL 1mm	LASER CUTTING/BENDING	LASER/BENDING MACHINES	BEML
21	T015356	BACK OUTSIDE RIGHT WALL WITHOUT WINDOW	1	P	8,228	SHEET METAL 1mm	LASER CUTTING/BENDING	LASER/BENDING MACHINES	BEML
22	T015107	BACK MIDDLE WALL	1	P	5,697	SHEET METAL 1mm	LASER CUTTING/BENDING	LASER/BENDING MACHINES	BEML
26	442 9 8930 036 4	WASHER FOR M8 ASSEMBLY	5	A	0,018		WELDING	WELDING TOOL	BEML

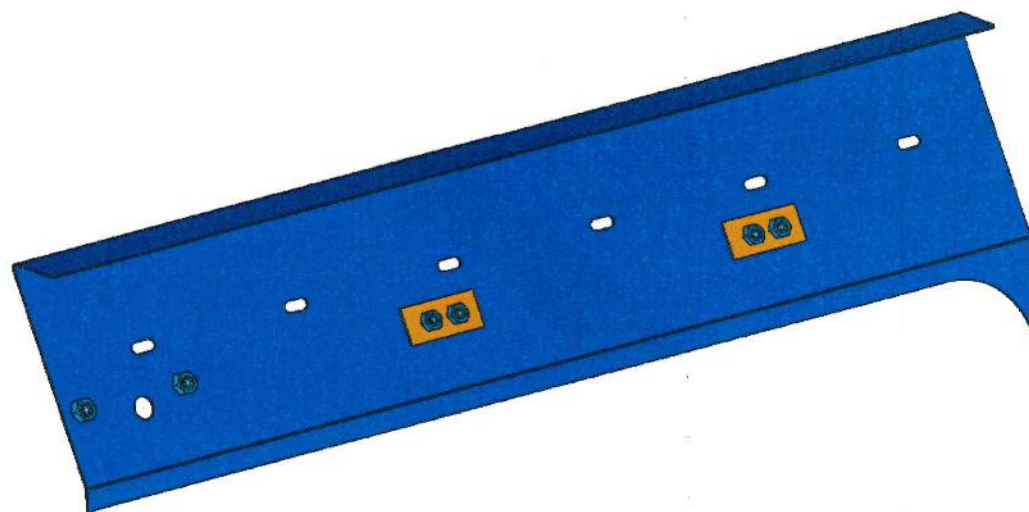




	T015483	SUCTION HOLDER ASSEMBLY							
POS	PART NUMBER	DESCRIPTION	QUANTITY PER MAIN ASSEMBLY	UNIT	WEIGHT kg	MATERIAL	PRODUCTION TECHNOLOGY	TOOLINGS/FIXTURES	MANUFACTURER
1	T015483	SUCTION HOLDER	1	P	0,058	SHEET METAL 2mm	LASER CUTTING/BENDING	LASER/BENDING MACHINES	BEML
2	TW01643	Precise Hexagon nut M10 DIN 929	1	P	0,011		-	-	PURCHASE

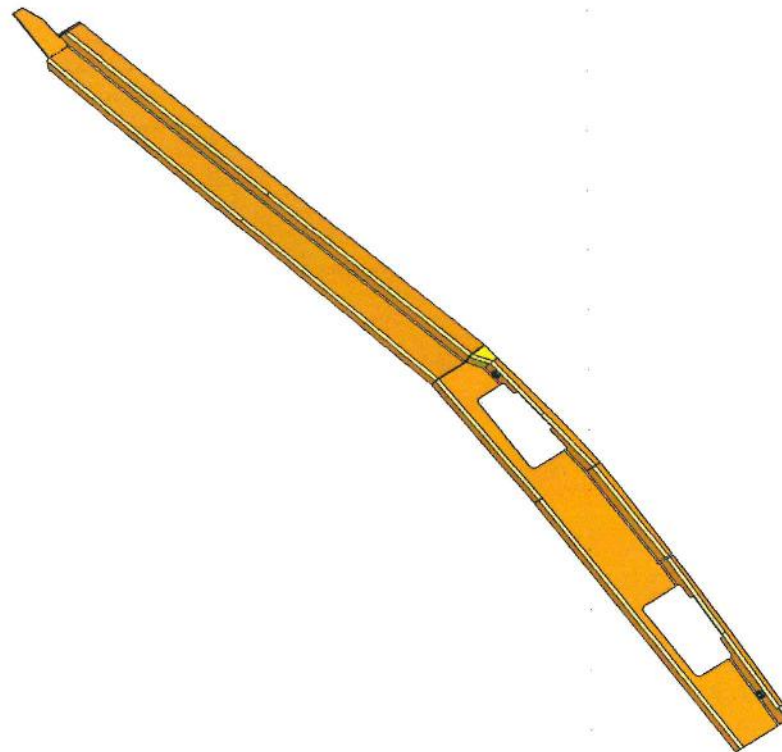


	T015287	RING PLATE OUT TOP L, ASSEMBLY							
POS	PART NUMBER	DESCRIPTION	QUANTITY PER MAIN ASSEMBLY	UNIT	WEIGHT kg	MATERIAL	PRODUCTION TECHNOLOGY	TOOLINGS/FIXTURES	MANUFACTURER
1	T015087	RING PLATE OUT TOP LEFT	1	P	0,758	SHEET METAL 1mm	LASER CUTTING/BENDING	LASER/BENDING MACHINES	BEML
2	442 9 8930 051 4	WASHER COMPLETE	2	A	0,021		WELDING	WELDING TOOL	BEML
3	TW00114	Hexagon nut M6 DIN 929	2	P	0,006		-	-	PURCHASE

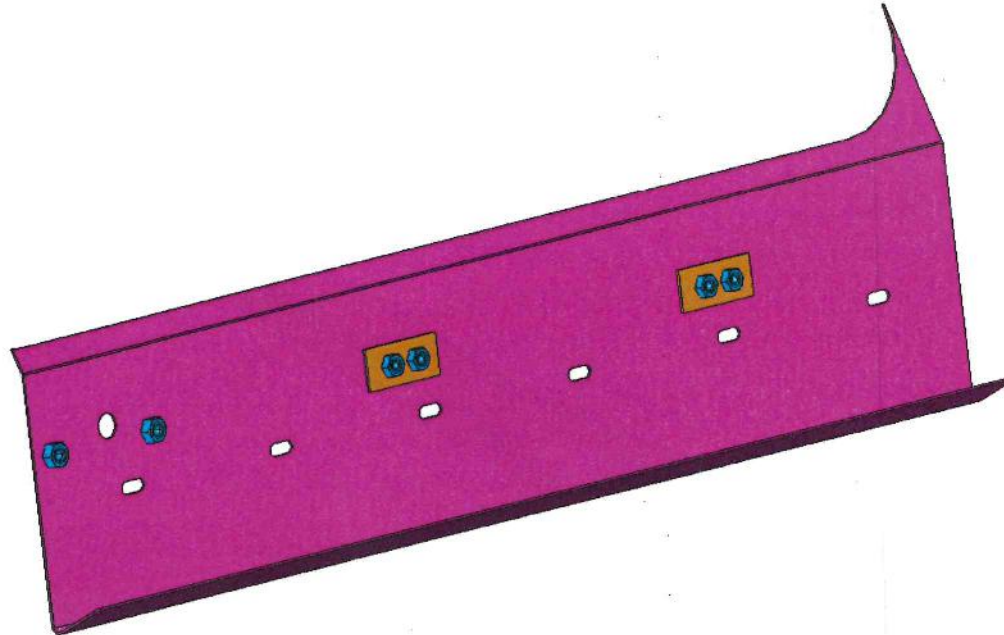




	T015477	LEFT DOOR FRAME BENDED ASSEMBLY							
POS	PART NUMBER	DESCRIPTION	QUANTITY PER MAIN ASSEMBLY	UNIT	WEIGHT kg	MATERIAL	PRODUCTION TECHNOLOGY	TOOLINGS/FIXTURES	MANUFACTURER
1	T015479	LEFT DOOR FRAME BENDED	1	P	2,262	SHEET METAL 2mm	LASER CUTTING/BENDING	LASER/BENDING MACHINES	BEML
2	T015481	LEFT DOOR FRAME PATCH	1	P	0,017	SHEET METAL 2mm	LASER CUTTING/BENDING	LASER/BENDING MACHINES	BEML
3	TW00114	Hexagon nut M6 DIN 929	2	P	0,006		-	-	PURCHASE

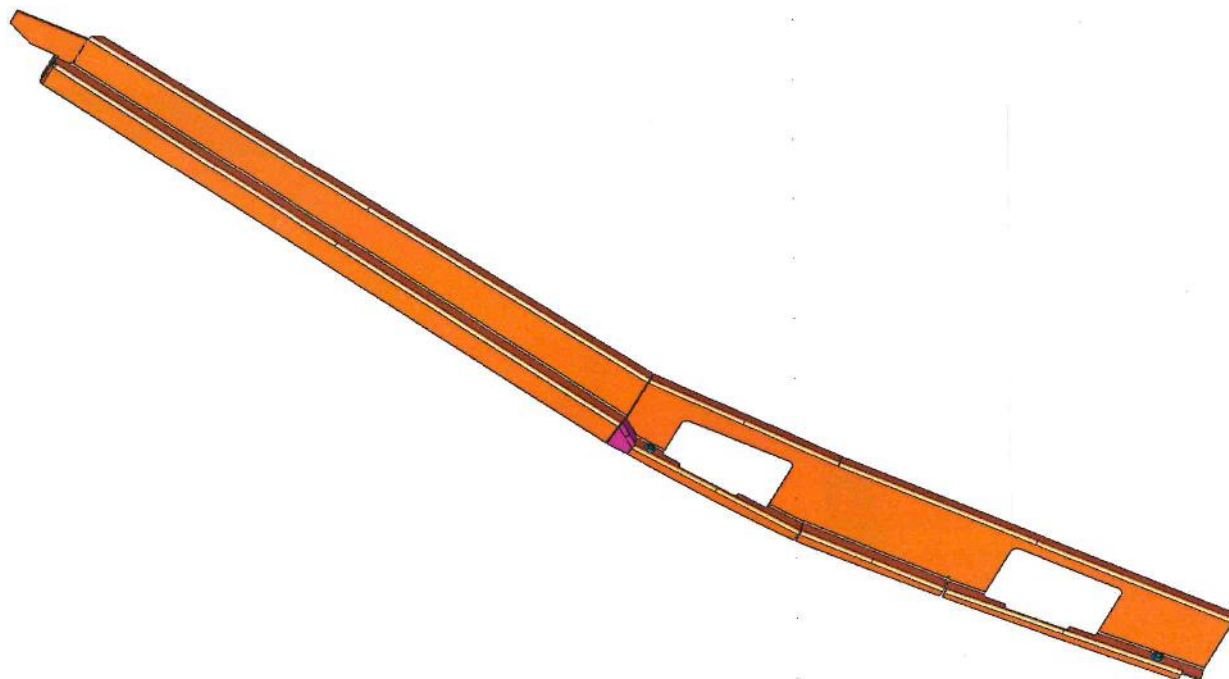


	T015288	RING PLATE OUT TOP R, ASSEMBLY							
POS	PART NUMBER	DESCRIPTION	QUANTITY PER MAIN ASSEMBLY	UNIT	WEIGHT kg	MATERIAL	PRODUCTION TECHNOLOGY	TOOLINGS/FIXTURES	MANUFACTURER
1	T015088	RING PLATE OUT TOP RIGHT	1	P	0,758	SHEET METAL 1mm	LASER CUTTING/BENDING	LASER/BENDING MACHINES	BEML
2	442 9 8930 051 4	WASHER COMPLETE	2	A	0,021		WELDING	WELDING TOOL	BEML
3	TW00114	Hexagon nut M6 DIN 929	2	P	0,006		-	-	PURCHASE

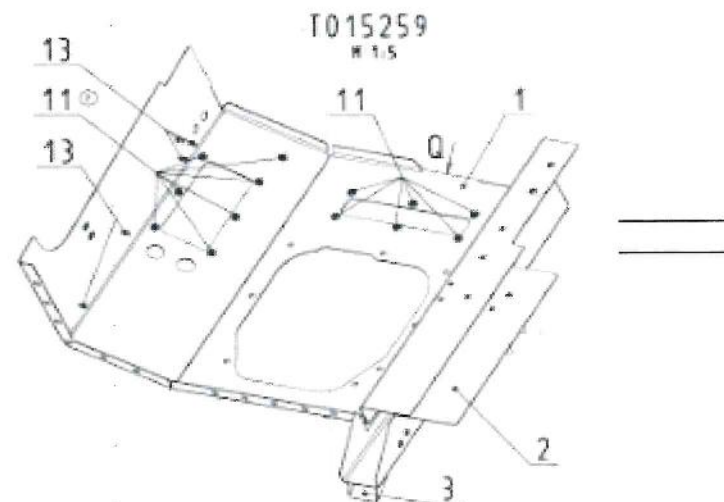
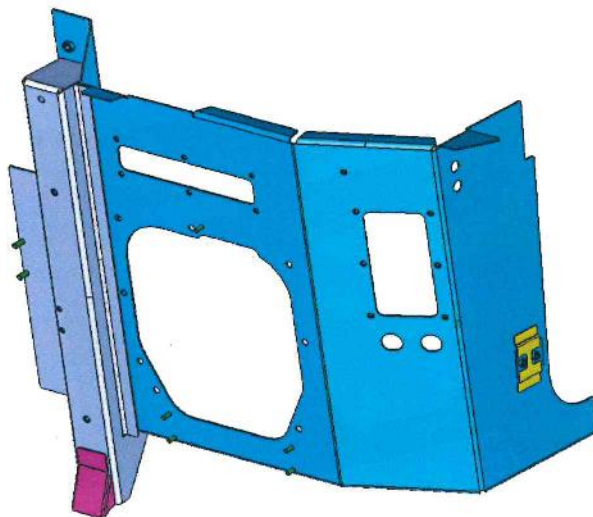




	T015478	RIGHT DOOR FRAME BENDED ASSEMBLY							
POS	PART NUMBER	DESCRIPTION	QUANTITY PER MAIN ASSEMBLY	UNIT	WEIGHT kg	MATERIAL	PRODUCTION TECHNOLOGY	TOOLINGS/FIXTURES	MANUFACTURER
1	T015480	LEFT DOOR FRAME BENDED	1	P	2,262	SHEET METAL 2mm	LASER CUTTING/BENDING	LASER/BENDING MACHINES	BEML
2	T015482	LEFT DOOR FRAME PATCH	1	P	0,017	SHEET METAL 2mm	LASER CUTTING/BENDING	LASER/BENDING MACHINES	BEML
3	TW00114	Hexagon nut M6 DIN 929	2	P	0,006		-	-	PURCHASE

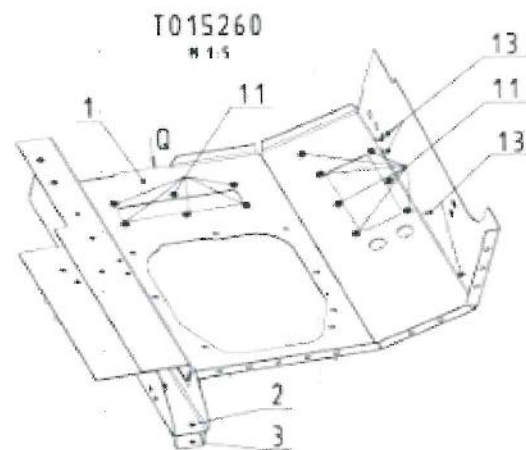
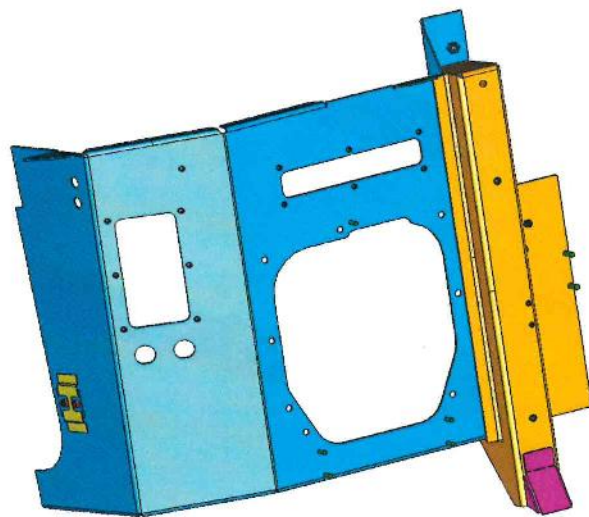


	T015259	LEFT FORWARD WALL ASSEMBLY							
POS	PART NUMBER	DESCRIPTION	QUANTITY PER MAIN ASSEMBLY	UNIT	WEIGHT kg	MATERIAL	PRODUCTION TECHNOLOGY	TOOLINGS/FIXTURES	MANUFACTURER
1	T015059	INSIDE FACE LEFT	1	P	5,89	SHEET METAL 2mm	LASER CUTTING/BENDING	LASER/BENDING MACHINES	BEML
2	T015057	FRONT WEB LEFT	1	P	2,422	SHEET METAL 2mm	LASER CUTTING/BENDING	LASER/BENDING MACHINES	BEML
3	T015055	FRONT HOUSING STIFFENER	1	P	0,084	SHEET METAL 2mm	LASER CUTTING/BENDING	LASER/BENDING MACHINES	BEML
5	442 9 4827 058 4	WASHER CAGE	1	P	0,024	SHEET METAL 2mm	LASER CUTTING/BENDING	LASER/BENDING MACHINES	BEML
6	442 9 8930 169 4	WASHER COMPLETE	1	A	0,036		WELDING	WELDING TOOL	BEML
10	TW00862	Hexagon nut M5 DIN 929	7	P	0,014		-	-	PURCHASE
11	TW00114	Hexagon nut M6 DIN 929	15	P	0,044		-	-	PURCHASE
12	TW00115	Hexagon nut M8 DIN 929	6	P	0,037		-	-	PURCHASE
13	TW01519	Screw M6x12 11-06-012	10	P	0,026		-	-	PURCHASE
14	TW00738	Screw M8x15 11-08-015	2	P	0,012		-	-	PURCHASE

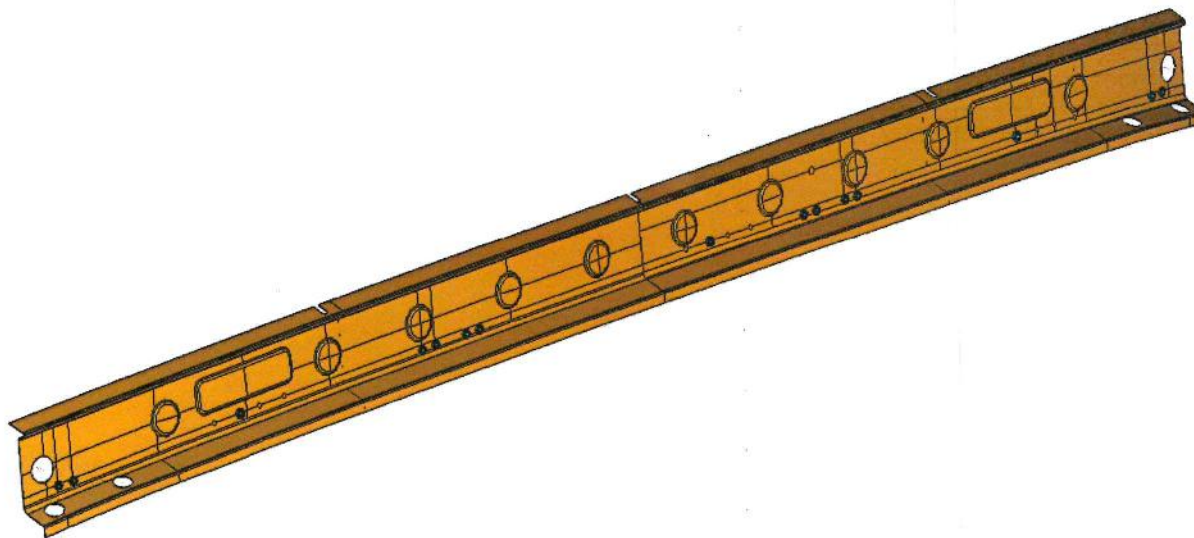




	T015260	RIGHT FORWARD WALL ASSEMBLY							
POS	PART NUMBER	DESCRIPTION	QUANTITY PER MAIN ASSEMBLY	UNIT	WEIGHT kg	MATERIAL	PRODUCTION TECHNOLOGY	TOOLINGS/FIXTURES	MANUFACTURER
1	T015060	INSIDE FACE RIGHT	1	P	5,89	SHEET METAL 2mm	LASER CUTTING/BENDING	LASER/BENDING MACHINES	BEML
2	T015058	FRONT WEB RIGHT	1	P	2,422	SHEET METAL 2mm	LASER CUTTING/BENDING	LASER/BENDING MACHINES	BEML
3	T015055	FRONT HOUSING STIFFENER	1	P	0,084	SHEET METAL 2mm	LASER CUTTING/BENDING	LASER/BENDING MACHINES	BEML
5	442 9 4827 058 4	WASHER CAGE	1	P	0,024	SHEET METAL 2mm	LASER CUTTING/BENDING	LASER/BENDING MACHINES	BEML
6	442 9 8930 169 4	WASHER COMPLETE	1	A	0,036		WELDING	WELDING TOOL	BEML
10	TW00862	Hexagon nut M5 DIN 929	7	P	0,014		-	-	PURCHASE
11	TW00114	Hexagon nut M6 DIN 929	15	P	0,044		-	-	PURCHASE
12	TW00115	Hexagon nut M8 DIN 929	6	P	0,037		-	-	PURCHASE
13	TW01519	Screw M6x12 11-06-012	10	P	0,026		-	-	PURCHASE
14	TW00738	Screw M8x15 11-08-015	2	P	0,012		-	-	PURCHASE

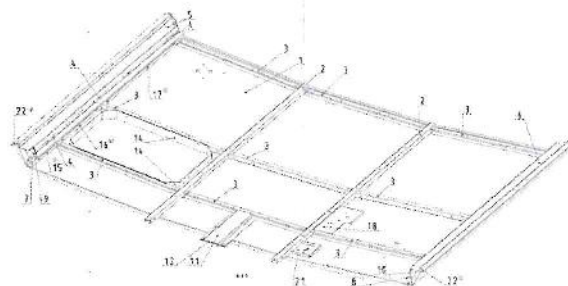
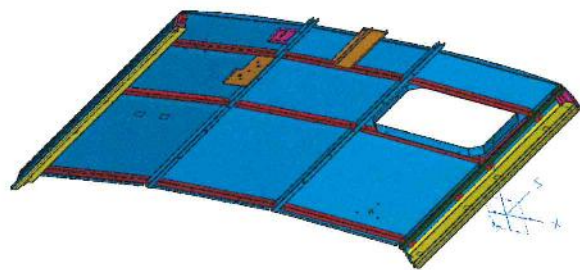


	T015373	DIAGONAL BEAM OVER WINDOW COMPLETE							
POS	PART NUMBER	DESCRIPTION	QUANTITY PER MAIN ASSEMBLY	UNIT	WEIGHT kg	MATERIAL	PRODUCTION TECHNOLOGY	TOOLINGS/FIXTURES	MANUFACTURER
1	T015372	DIAGONAL BEAM OVER WINDOW	1	P	3,499	SHEET METAL 1,3mm	LASER CUTTING/BENDING	LASER/BENDING MACHINES	BEML
2	TW00862	Hexagon nut M5 DIN 929	12	P	0,002	-	-	-	PURCHASE
3	TW00114	Hexagon nut M6 DIN 929	3	P	0,003	-	-	-	PURCHASE

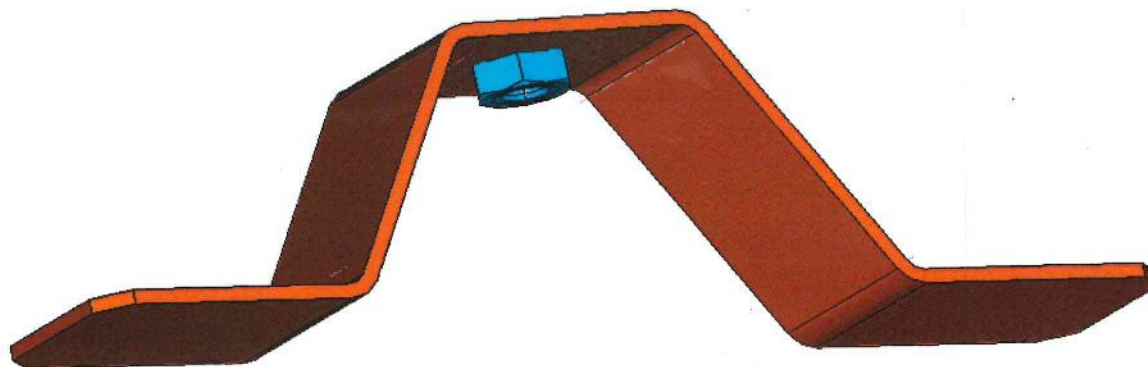




T016739 CROSSBEAM UNDER WINDOW ASSEMBLY									
POS	PART NUMBER	DESCRIPTION	QUANTITY PER MAIN ASSEMBLY	UNIT	WEIGHT kg	MATERIAL	PRODUCTION TECHNOLOGY	TOOLINGS/FIXTURES	MANUFACTURER
1	T015435	ROOF SHEET METAL	1	P	26,458	SHEET METAL 1mm	LASER CUTTING/BENDING	LASER/BENDING MACHINES	BEML
2	T015433	SIDE MEMBER INTERIOR	2	P	1,886	SQUARE PROFILE 1,5mm thick	LASER CUTTING	LASER	BEML
3	T015121	CROSS MEMBER	9	P	0,4	SHEET METAL 1mm	LASER CUTTING/BENDING	LASER/BENDING MACHINES	BEML
4	T015123	CROSS MEMBER CORNER	8	P	0,107	SQUARE PROFILE 1,5mm thick	LASER CUTTING	LASER	BEML
5	T015429	SIDE MEMBER BOTTOM LEFT	1	P	2,151	SHEET METAL 1,5mm	LASER CUTTING/BENDING	LASER/BENDING MACHINES	BEML
6	T015430	SIDE MEMBER BOTTOM RIGHT	1	P	2,151	SHEET METAL 1,5mm	LASER CUTTING/BENDING	LASER/BENDING MACHINES	BEML
7	T015431	SIDE MEMBER EXTERIOR LEFT	1	P	2,158	RECTANGULAR PROFILE 1,5mm thick	LASER CUTTING	LASER	BEML
8	T015432	SIDE MEMBER EXTERIOR RIGHT	1	P	2,158	RECTANGULAR PROFILE 1,5mm thick	LASER CUTTING	LASER	BEML
9	T015125	FRONT BORDER ROOF LEFT	1	P	0,088	SHEET METAL 1mm	LASER CUTTING/BENDING	LASER/BENDING MACHINES	BEML
10	T015126	FRONT BORDER ROOF RIGHT	1	P	0,088	SHEET METAL 1mm	LASER CUTTING/BENDING	LASER/BENDING MACHINES	BEML
11	T015127	SIDE MEMBER MIDDLE	1	P	0,411	SHEET METAL 1mm	LASER CUTTING/BENDING	LASER/BENDING MACHINES	BEML
12	T015825	STIFFENER ROOF MIRROR	1	P	0,085	SHEET METAL 1mm	LASER CUTTING/BENDING	LASER/BENDING MACHINES	BEML
14	T015179	ROOF OPENNING BORDER-SMALL	2	P	0,819	SHEET METAL 2mm	LASER CUTTING/BENDING	LASER/BENDING MACHINES	BEML
15	T015365	ATTACH ROOF COVER	2	P	0,034	SHEET METAL 1mm	LASER CUTTING/BENDING	LASER/BENDING MACHINES	BEML
16	T015366	ATTACH ROOF COVER 2	2	P	0,084	SHEET METAL 1mm	LASER CUTTING/BENDING	LASER/BENDING MACHINES	BEML
17	T015367	ATTACH ROOF COVER 3	2	P	0,148	SHEET METAL 1mm	LASER CUTTING/BENDING	LASER/BENDING MACHINES	BEML
18	442 9 7227 061 4	LIGHT CONSOLE ASSEMBLY	1	A	0,381		WELDING	WELDING TOOL	BEML
19	T015485	CONSOLE SUCTION COBRA ASSEMBLY	1	A	0,165		WELDING	WELDING TOOL	BEML
21	T015450	VIEWFINDER BRACKET	1	P	0,248	SHEET METAL 2mm	LASER CUTTING/BENDING	LASER/BENDING MACHINES	BEML
22	T015369	RIM EXTENSION	2	P	0,01	SHEET METAL 1,5mm	LASER CUTTING	LASER	BEML

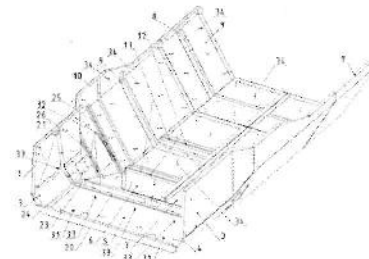
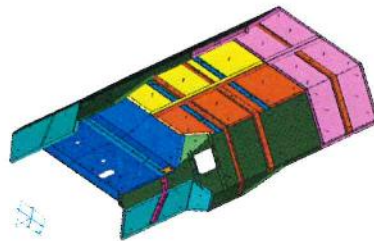


	T015485	CONSOLE SUCTION COBRA ASSEMBLY							
POS	PART NUMBER	DESCRIPTION	QUANTITY PER MAIN ASSEMBLY	UNIT	WEIGHT kg	MATERIAL	PRODUCTION TECHNOLOGY	TOOLINGS/FIXTURES	MANUFACTURER
1	T015486	CONSOLE SUCTION COBRA	1	P	0,165	SHEET METAL 2mm	LASER CUTTING/BENDING	LASER/BENDING MACHINES	BEML
2	TW00115	Screw M8x15 11-08-015	1	P	0,006	-	-	-	PURCHASE

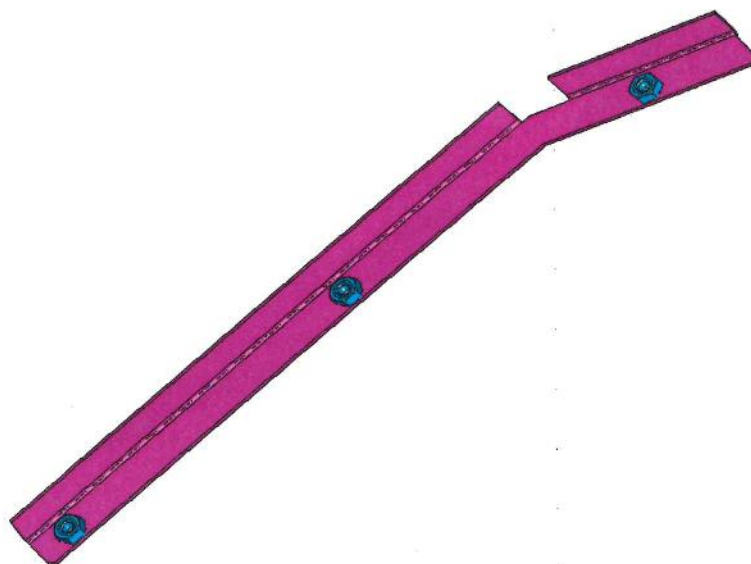




	T015472	MOTOR COVER SKS ASSEMBLY							
POS	PART NUMBER	DESCRIPTION	QUANTITY PER MAIN ASSEMBLY	UNIT	WEIGHT kg	MATERIAL	PRODUCTION TECHNOLOGY	TOOLINGS/FIXTURES	MANUFACTURER
1	T015031	LEFT TUNNEL SIDE PLATE	1	P	1,752	SHEET METAL 1mm	LASER CUTTING/BENDING	LASER/BENDING MACHINES	BEML
2	T015032	RIGHT TUNNEL SIDE PLATE	1	P	1,753	SHEET METAL 1mm	LASER CUTTING/BENDING	LASER/BENDING MACHINES	BEML
3	T015035	LEFT TUNNEL JUNCTION	1	P	4,816	SHEET METAL 1mm	LASER CUTTING/BENDING	LASER/BENDING MACHINES	BEML
4	T015036	RIGHT TUNNEL JUNCTION	1	P	4,816	SHEET METAL 1mm	LASER CUTTING/BENDING	LASER/BENDING MACHINES	BEML
5	T015033	TUNEL COVER	1	P	4,29	SHEET METAL 1mm	LASER CUTTING/BENDING	LASER/BENDING MACHINES	BEML
6	T015233	LEFT TUNEL COVER	1	P	3,636	SHEET METAL 1,3mm	LASER CUTTING/BENDING	LASER/BENDING MACHINES	BEML
7	T015234	RIGHT TUNEL COVER	1	P	3,636	SHEET METAL 1,3mm	LASER CUTTING/BENDING	LASER/BENDING MACHINES	BEML
8	T015417	TUNEL STIFFENER	4	P	0,681	SHEET METAL 2mm	LASER CUTTING/BENDING	LASER/BENDING MACHINES	BEML
9	T015421	EXTEND OF 1 BACK TUNNEL	2	P	4,295	SHEET METAL 1,3mm	LASER CUTTING/BENDING	LASER/BENDING MACHINES	BEML
10	T015037	TUNEL STIFFENER	2	P	0,774	SHEET METAL 2mm	LASER CUTTING/BENDING	LASER/BENDING MACHINES	BEML
11	T015446	ENGINE COVER BAR	4	P	0,363	SHEET METAL 2mm	LASER CUTTING/BENDING	LASER/BENDING MACHINES	BEML
20	T015186	STIFFENER COVER ENGINE	1	P	0,817	SHEET METAL 2mm	LASER CUTTING/BENDING	LASER/BENDING MACHINES	BEML
21	T015187	LEFT BAR AIR CONDUCT ASSEMBLY	1	A	0,292		WELDING	WELDING TOOL	BEML
22	T015188	RIGHT BAR AIR CONDUCT ASSEMBLY	1	A	0,292		WELDING	WELDING TOOL	BEML
23	442 9 8930 288 4	STIFFENER WITH NUTS	2	A	0,088		WELDING	WELDING TOOL	BEML
24	T015449	ENGINE COVER GEAR BRACKET ASSEMBLY	1	A	0,289		WELDING	WELDING TOOL	BEML
25	442 9 0275 082 4	STIFFENER GEAR BRACKET LONG	1	P	0,339	SHEET METAL 2mm	LASER CUTTING/BENDING	LASER/BENDING MACHINES	BEML
26	442 9 0275 083 4	STIFFENER GEAR BRACKET SHORT	1	P	0,201	SHEET METAL 2mm	LASER CUTTING/BENDING	LASER/BENDING MACHINES	BEML
27	442 9 0275 084 4	STIFFENER GEAR BRACKET LONG RIGHT	1	P	0,339	SHEET METAL 2mm	LASER CUTTING/BENDING	LASER/BENDING MACHINES	BEML
28	442 9 0275 085 4	STIFFENER GEAR BRACKET SHORT RIGHT	1	P	0,201	SHEET METAL 2mm	LASER CUTTING/BENDING	LASER/BENDING MACHINES	BEML
31	TW00114	Hexagon nut M6 DIN 929	4	P	0,003		-	-	PURCHASE
32	TW00115	Hexagon nut M8 DIN 929	16	P	0,006		-	-	PURCHASE
33	TW03488	Screw M3x25	15	P	0,001		-	-	PURCHASE
34	TW03840	Screw M3x30 11-03-30 DIN EN ISO 1	93	P	0,002		-	-	PURCHASE

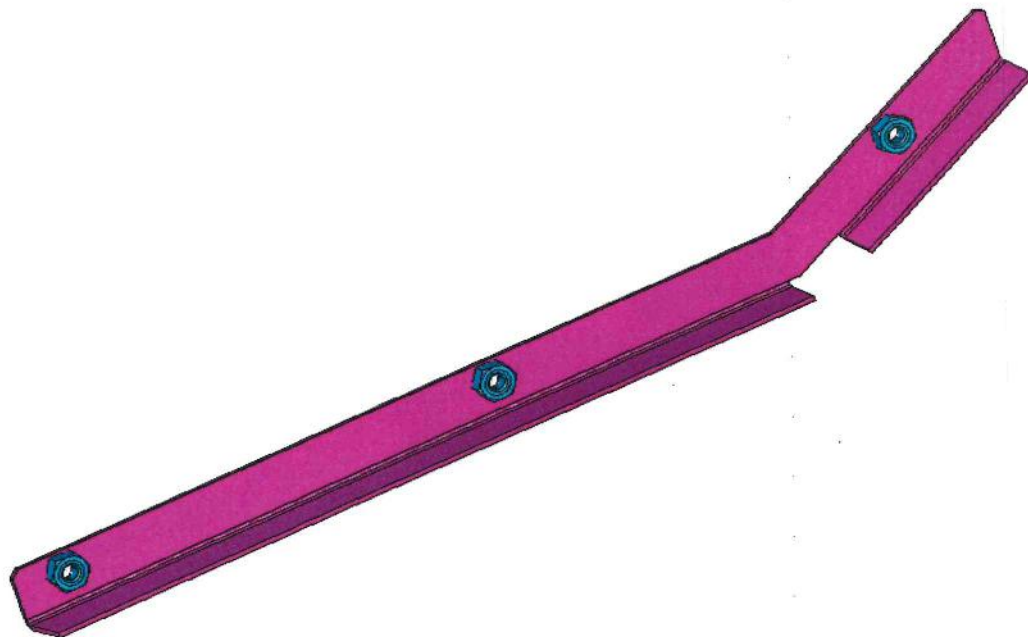


	T015187	LEFT BAR AIR CONDUCT ASSEMBLY							
POS	PART NUMBER	DESCRIPTION	QUANTITY PER MAIN ASSEMBLY	UNIT	WEIGHT kg	MATERIAL	PRODUCTION TECHNOLOGY	TOOLINGS/FIXTURES	MANUFACTURER
1	T015189	LEFT BAR AIR CONDUCT	1	P	0,274	SHEET METAL 2mm	LASER CUTTING/BENDING	LASER/BENDING MACHINES	BEML
2	TW00115	Hexagon nut M8 DIN 929	3	P	0,019	-	-	-	PURCHASE

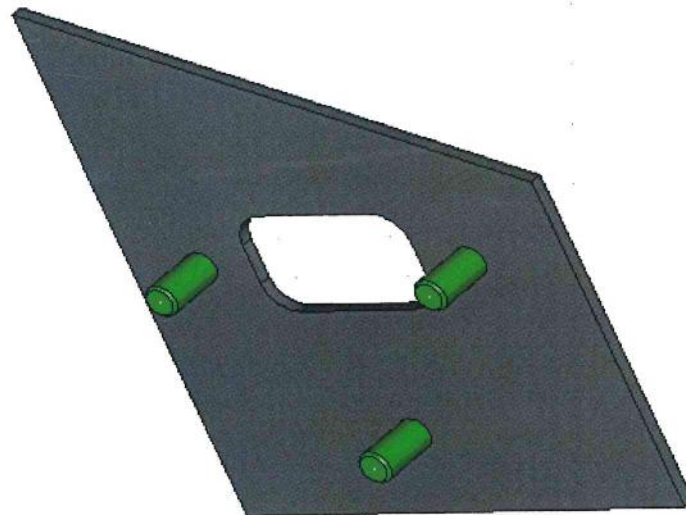




	T015188	RIGHT BAR AIR CONDUCT ASSEMBLY							
POS	PART NUMBER	DESCRIPTION	QUANTITY PER MAIN ASSEMBLY	UNIT	WEIGHT kg	MATERIAL	PRODUCTION TECHNOLOGY	TOOLINGS/FIXTURES	MANUFACTURER
1	T015190	RIGHT BAR AIR CONDUCT	1	P	0,274	SHEET METAL 2mm	LASER CUTTING/BENDING	LASER/BENDING MACHINES	BEML
2	TW00115	Hexagon nut M8 DIN 929	3	P	0,019	-	-	-	PURCHASE



	T015449	ENGINE COVER GEAR BRACKET ASSEMBLY							
POS	PART NUMBER	DESCRIPTION	QUANTITY PER MAIN ASSEMBLY	UNIT	WEIGHT kg	MATERIAL	PRODUCTION TECHNOLOGY	TOOLINGS/FIXTURES	MANUFACTURER
1	442 9 2201 699 4	ENGINE COVER GEAR BRACKET	1	P	0,271	SHEET METAL 3mm	LASER CUTTING	LASER	BEML
2	TW00738	Screw M8x15 11-08-015	3	P	0,018	-	-	-	PURCHASE

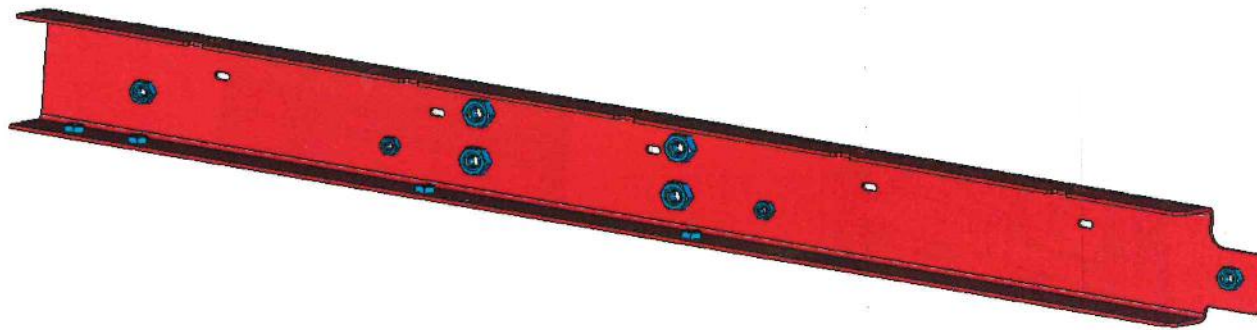




	T015337	TRANSOM LEFT ASSEMBLY							
POS	PART NUMBER	DESCRIPTION	QUANTITY PER MAIN ASSEMBLY	UNIT	WEIGHT kg	MATERIAL	PRODUCTION TECHNOLOGY	TOOLINGS/FIXTURES	MANUFACTURER
1	T015300	TRANSOM LEFT	1	P	2,149	SHEET METAL 2,5mm	LASER CUTTING/BENDING	LASER/BENDING MACHINES	BEML
10	TW00114	Hexagon nut M6 DIN 929	6	P	0,018	-	-	-	PURCHASE
11	TW00115	Hexagon nut M8 DIN 929	2	P	0,012	-	-	-	PURCHASE
12	TW01643	Precise Hexagon nut M10 DIN 929	4	P	0,044	-	-	-	PURCHASE

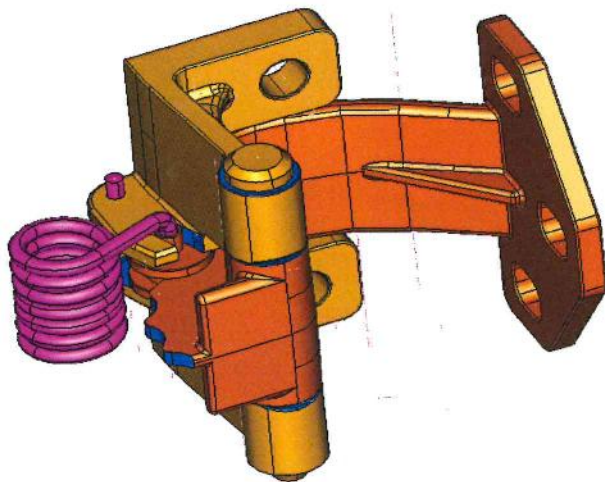


	T015338	TRANSOM RIGHT ASSEMBLY							
POS	PART NUMBER	DESCRIPTION	QUANTITY PER MAIN ASSEMBLY	UNIT	WEIGHT kg	MATERIAL	PRODUCTION TECHNOLOGY	TOOLINGS/FIXTURES	MANUFACTURER
1	T015301	TRANSOM RIGHT	1	P	2,149	SHEET METAL 2,5mm	LASER CUTTING/BENDING	LASER/BENDING MACHINES	BEML
10	TW00114	Hexagon nut M6 DIN 929	6	P	0,018	-	-	-	PURCHASE
11	TW00115	Hexagon nut M8 DIN 929	2	P	0,012	-	-	-	PURCHASE
12	TW01643	Precise Hexagon nut M10 DIN 929	4	P	0,044	-	-	-	PURCHASE

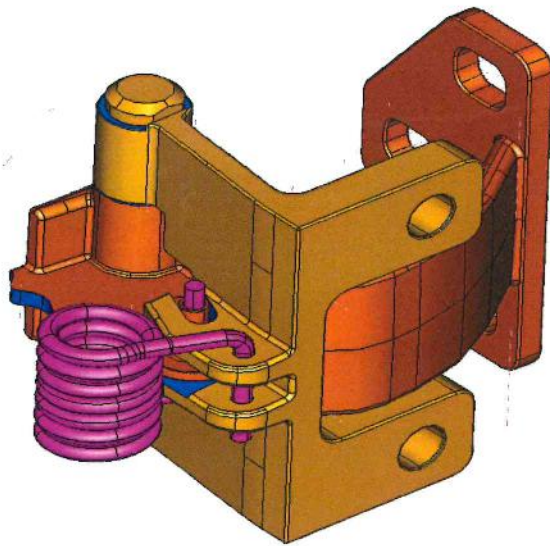




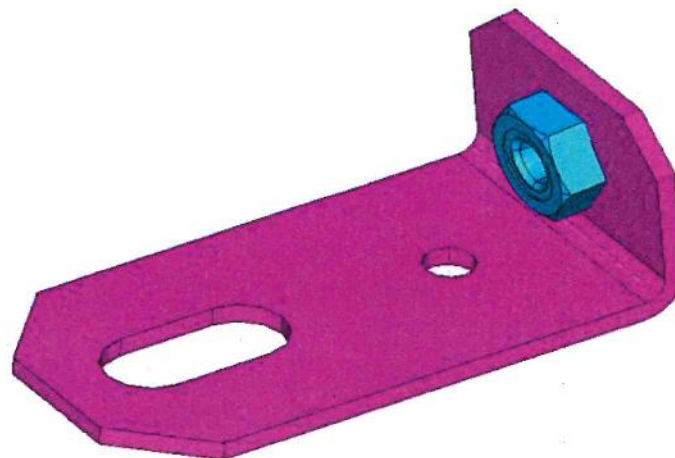
	T015151	HINGE LEFT ASSY							
POS	PART NUMBER	DESCRIPTION	QUANTITY PER MAIN ASSEMBLY	UNIT	WEIGHT kg	MATERIAL	PRODUCTION TECHNOLOGY	TOOLINGS/FIXTURES	MANUFACTURER
1	T015159	FIXED HINGE	1	P	0,414	-	CASTING	-	BEML
2	T015161	ROTATE PART HINGE	1	P	0,426	-	CASTING	-	BEML
3	T015163	PIN HINGE	1	P	0,06	-	TURNING	TURNING MACHINE	BEML
4	T015165	ROLL LIMITER	1	P	0,016	-	TURNING	TURNING MACHINE	BEML
5	T015171	LIMITER SPRING	1	P	0,051	-	FORMING OPERATION	FORMING MACHINE	BEML
6	TW03864	RING PDK 10	1	P	0,001	-	-	-	PURCHASE



	T015152	HINGE RIGHT ASSY							
POS	PART NUMBER	DESCRIPTION	QUANTITY PER MAIN ASSEMBLY	UNIT	WEIGHT kg	MATERIAL	PRODUCTION TECHNOLOGY	TOOLINGS/FIXTURES	MANUFACTURER
1	T015159	FIXED HINGE	1	P	0,414	-	CASTING	-	BEML
2	T015161	ROTATE PART HINGE	1	P	0,426	-	CASTING	-	BEML
3	T015163	PIN HINGE	1	P	0,06	-	TURNING	TURNING MACHINE	BEML
4	T015165	ROLL LIMITER	1	P	0,016	-	TURNING	TURNING MACHINE	BEML
5	T015171	LIMITER SPRING	1	P	0,051	-	FORMING OPERATION	FORMING MACHINE	BEML
6	TW03864	RING PDK 10	1	P	0,001	-	-	-	PURCHASE



	T015467	SIDEWAYS PART BRACKET ASSEMBLY							
POS	PART NUMBER	DESCRIPTION	QUANTITY PER MAIN ASSEMBLY	UNIT	WEIGHT kg	MATERIAL	PRODUCTION TECHNOLOGY	TOOLINGS/FIXTURES	MANUFACTURER
1	T015466	SIDEWAYS PART BRACKET	1	P	0,031	SHEET METAL 2mm	LASER CUTTING/BENDING	LASER/BENDING MACHINES	BEML
2	TW00114	Hexagon nut M6 DIN 929	1	P	0,003	-	-	-	PURCHASE



*Handwritten signature*